

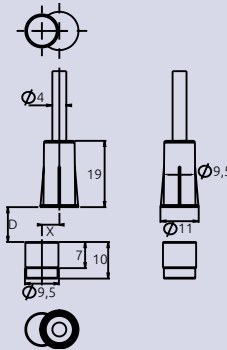
R
series

CLR-TW-4C models

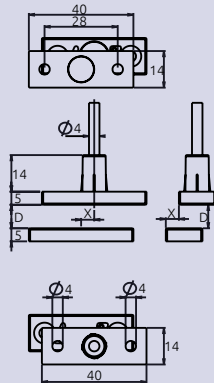
FLUSH MOUNT



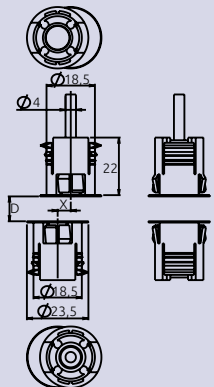
CLR-TW-4C + CLR-MGA



CLR-TW-4C + CLR-AL



CLR-TW-4C + CLR-BL



Contact closed with magnet in secure position Four wire flying lead with tamper pass-through

TSEC's exclusive, CLIC R-series contacts feature best in class engineering, build and security properties in a small yet rugged flush mount case.

- ▶ Design based on patented Magnasphere® technology, used under license
- ▶ Magnetic anti-masking: magnets placed outside of the protected perimeter cannot prevent the contact from opening once the reference magnet moves away
- ▶ High resistance to mechanical and electrical shocks
- ▶ CLIC adapters and magnets make it ideal for any type of door and window: aluminum, PVC, wood or reinforced steel. Ease of installation, symplified logistics, high security
- ▶ Fully potted construction: suitable for internal or external use

Technical features

CASE Plastic
MAGNET Neodymium
POTTING Fully potted
ELECTRICAL CONTACT Closed with magnet in secure position
ELECTRICAL PARAMETERS 30 VDC max, 250 mA, 0.25 W
TERMINALS 50cm 4x0.14 flying lead, PVC sheath, tamper pass-through
RESISTANCE TO MECHANICAL SHOCKS Up to 100g acceleration
SECURITY Compatible w/ Grade 3 EN 50131-2-6
ENVIRONMENTAL CLASS Compatible w/ Class IV EN 50131-2-6
COLOUR CODES ...-N: brown ...-W: white

Ordering guide

SENSOR	ADAPTER	USE	D MAX	X MAX	PACKAGING
CLR-TW-4C-N	CLR-MGA-N CLR-MGA-W	Wood	On wood: 10 mm	3 mm	Sensor: 10 pcs Magnet: 10 pcs
	CLR-AL-N CLR-AL-W	Reinforced steel, aluminum, PVC	On ferrous mat.: 5 mm On non-ferrous mat.: 8 mm		Sensor: 10 pcs Adapter+Magnet: 10 sets
CLR-TW-4C-W	CLR-BL-N CLR-BL-W	Reinforced steel	On ferrous mat.: 6 mm		Sensor: 10 pcs Adapter+Magnet: 5 sets