

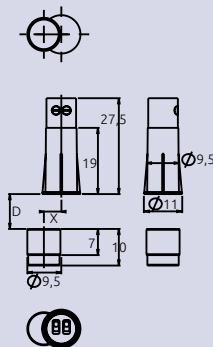
R series

CLR-L-T models

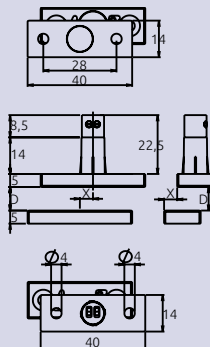
FLUSH MOUNT



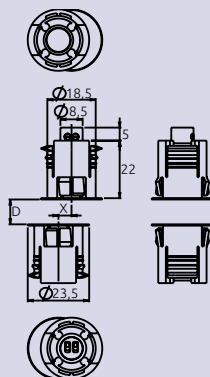
CLR-L-T + CLR-MGA



CLR-L-T + CLR-AL



CLR-L-T + CLR-BL



Contact open with magnet in secure position Screw terminals

CLIC R-series contacts with screw terminals are the first devices that combine high security Magnasphere® technology with the convenience of embedded EOL resistors in such a compact case. CLR-L models offer particularly large operating gaps.

- ▶ Design based on patented Magnasphere® technology, used under license
- ▶ Magnetic anti-masking: magnets placed outside of the protected perimeter cannot prevent the contact from closing once the reference magnet moves away
- ▶ High resistance to mechanical and electrical shocks
- ▶ CLIC adapters and magnets make it ideal for any type of door and window: aluminum, PVC, wood or reinforced steel. Ease of installation, simplified logistics, high security
- ▶ Fully potted circuitry
- ▶ Embedded EOL resistors available on request: ease of installation with maximum dependability
- ▶ Screw terminals for simplified installation
- ▶ Large operating gap

Technical features

| |
|--|
| CASE Plastic |
| MAGNET Neodymium |
| POTTING Internal circuitry |
| ELECTRICAL CONTACT Open with magnet in secure position |
| EMBEDDED EOL RESISTORS Optional on request: r Ohm in parallel |
| ELECTRICAL PARAMETERS 30 VDC max, 250 mA, 0.25 W |
| TERMINALS Screw terminals |
| RESISTANCE TO MECHANICAL SHOCKS Up to 100g acceleration |
| SECURITY Compatible w/ Grade 3 EN 50131-2-6 |
| ENVIRONMENTAL CLASS Compatible w/ Class II EN 50131-2-6 |
| COLOUR CODES ...-N: brown ...-W: white |

Ordering guide

| SENSOR | ADAPTER | USE | D MAX | X MAX | PACKAGING |
|-------------|------------------------|------------------------------------|--|-------|---|
| CLR-L-T-N | CLR-MGA-N CLR-MGA-W | Wood | On wood: 15 mm | 6 mm | Sensor: 10 pcs Magnet: 10 pcs |
| | CLR-AL-N CLR-AL-W | Reinforced steel, aluminum, PVC | On ferrous mat.: 10 mm On non-ferrous mat.: 12 mm | | Sensor: 10 pcs Adapter+Magnet: 10 sets |
| CLR-L-T-W | CLR-BL-N CLR-BL-W | Reinforced steel | On ferrous mat.: 10 mm | | Sensor: 10 pcs Adapter+Magnet: 5 sets |
| CLR-L-r-T-N | CLR-MGA-N CLR-MGA-W | Wood | On wood: 15 mm | 6 mm | Sensor: 10 pcs Magnet: 10 pcs |
| | CLR-AL-N CLR-AL-W | Reinforced steel, aluminum, PVC | On ferrous mat.: 10 mm On non-ferrous mat.: 12 mm | | Sensor: 10 pcs Adapter+Magnet: 10 sets |
| CLR-L-r-T-W | CLR-BL-N CLR-BL-W | Reinforced steel | On ferrous mat.: 10 mm | | Sensor: 10 pcs Adapter+Magnet: 5 sets |

NOTE: Embedded EOL resistor: r Ohm in parallel.
Substitute the required resistor value to the letter "r" to get the correct ordering code.