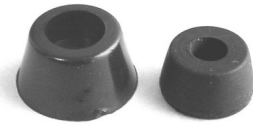
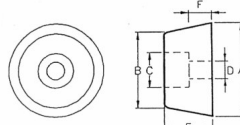


Hi-Q Components

Hi-Q Electronics Ltd, PO Box 302 015, North Harbour, Auckland, New Zealand Ph + 64 9 415 3333 Fax + 64 9 415 8686

Bumper - PVC - Screw or Rivet Mount

- ★ Moulded in a soft non slip black PVC .
- ★ Secure mounting by screw or rivet .

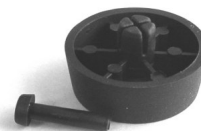


Part Number	Outside Dia. A	B mm	C mm	Mount Hole D	Height E	F mm	Fastening Screw or Rivet
25-PFS1608	16.0	13.0	6.0	3	7.8	3.6	M3
25-PFS2010	20.0	15.0	8.6	3.8	10.5	5.5	#6 or M4

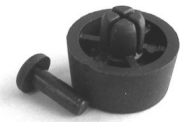
Also available in Rubber

Bumper - Fast Fix

- ★ No screws - Quick labour saving assembly.
- ★ Simply place the foot into prepared 8mm hole and push centre pin for secure fixing.



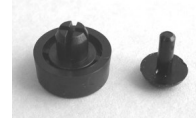
PFF3013



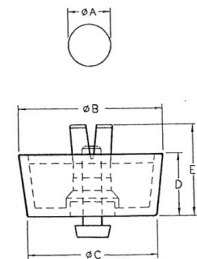
PFF2010

Part Number	Mount Hole A	Outside Dia. B	Outside Dia. C	Height D	Length E
25-PFF1304	5.0	12.7	12.0	4.4	8.5
25-PFF1604	5.0	15.7	15.0	4.4	8.5
25-PFF2010	8.0	20.0	18.0	10.0	15.4
25-PFF2015	8.0	20.0	18.0	15.0	20.6
25-PFF2018	8.0	20.0	18.0	18.0	23.6
25-PFF3013	8.0	30.0	27.7	12.8	19.0

Material: Thermoplastic Rubber Black



PFF1304



Bumper - Self Fix Rubber

- ★ No screws - Quick labour saving assembly.
- ★ Simply fit as you would a grommet..

Part Number	Mount Hole	Outside Dia.	Height
25-TNF10/2	5.0	9.5	2.4
25-TNF10/5	8.0	10.6	5.0
25-TNF13/4	6.4	13.0	4.2

Natural Rubber Black



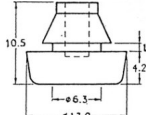
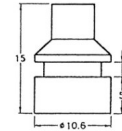
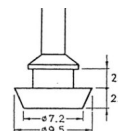
TNF10/2



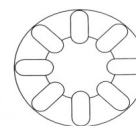
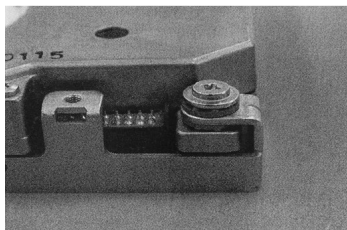
TNF10/5



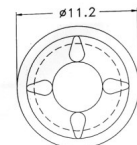
TNF13/4



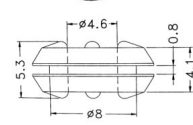
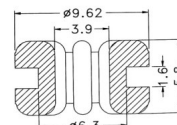
Anti Vibration Mount



22-TGM6.3



22-TGM8.0



Part Number	Panel Hole mm	Max. Panel Thick. T	Screw Hole Dia. mm
22-TGM6.3	6.3	1.6	3.9
22-TGM8.0	8.0	0.8	4.6

Material : TPE. Blue, Yellow or Purple

Hi-Q Components

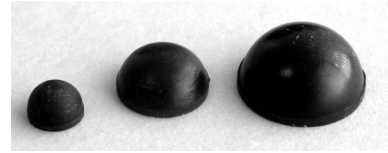
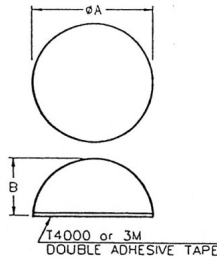
Hi-Q Electronics Ltd, PO Box 302 015, North Harbour, Auckland, New Zealand Ph + 64 9 415 3333 Fax + 64 9 415 8686

Rubber Bumpers - Self Adhesive

- ★ Moulded in black natural rubber for max. cushioning.
- ★ Quick assembly - Skid and scratch resistant.
- ★ Reliable 3M double sided adhesive.

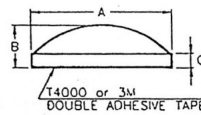
Dome

Part Number	Dia. A	Height B	Colour
25-RF07/4DM	6.7	4.2	Black
25-RF12/6DM	11.5	5.6	Black
25-RF16/8DM	15.9	8.0	Black



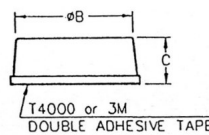
Raised Dome

Part Number	Dia. A	Height B	Height C	Colour
25-RF08/2RD	8.0	2.4	1.0	Black
25-RF08/2RD-T	8.0	2.4	1.0	Clear
25-RF10/4RD	9.8	4.0	1.0	Black
25-RT10/4RD-T	9.8	4.0	1.0	Clear
25-RF14/5RD	14.0	5.0	3.6	Black
25-RF14/5RD-T	14.0	5.0	3.6	Clear



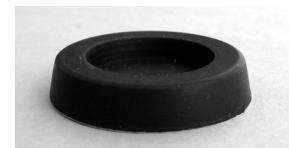
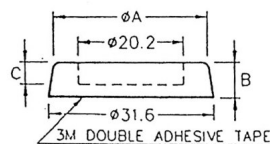
Round Taper

Part Number	Dia. A	Dia. B	Height C	Colour
25-RF09/4RT	9.0	8.6	3.5	Black
25-RF10/3RT	10.5	10.0	3.0	Black
25-RF12/4RT	12.0	9.5	4.0	Black
25-RF13/5RT	13.0	11.4	5.0	Black
25-RF19/7RT	19.0	17.0	7.2	Black



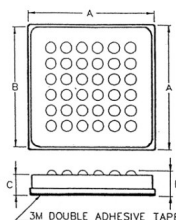
Round Recessed

Part Number	Outside Dia.	Dia. A	Height B	Colour
25-RF32/7RR	31.6	29.6	6.8	Black



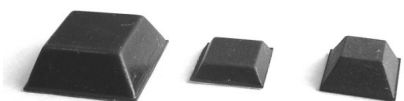
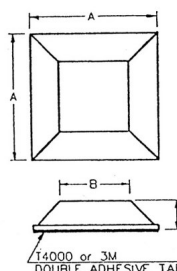
Square Dimpled

Part Number	Side A	Side B	Height D	Colour
25-RF14/2.6SD	14.0	13.5	2.6	Black
25-RF15/3.1SD	15.0	14.5	3.1	Black



Square Taper

Part Number	Side A	Side B	Height C	Colour
25-RF13/3.5SQ	12.7	9.0	3.5	Black
25-RF13/6SQ	12.7	7.0	6.0	Black
25-RF20/8SQ	20.5	14.0	7.6	Black



Other Styles, Dimensions and Materials and Colours available.