

**NOTES:**

**1. ELECTRICAL:**

**1.1 CONTACT CAPACITY 1 A & 120 VAC GENERAL PURPOSE.**

**2. OPERATE:**

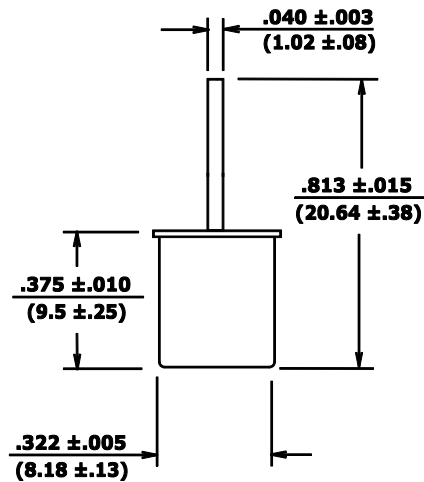
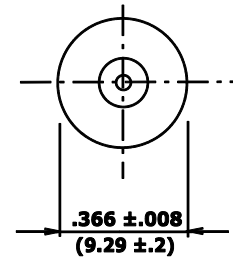
**2.1 WHEN STATIONARY IN ANY POSITION**

**THE SWITCH CONTACTS WILL ALWAYS REMAIN OPEN  
AND UPON VIBRATION OR MOVEMENT THE CONTACTS  
WILL INTERMITTENTLY CLOSE.**

**3. EXTERNAL FINISH:**

**3.1 EXTERNALLY TIN PLATED.**

REV.	DATE	REVISION RECORD	DR.
B	7/98 1999	UPDATE TO ISO 9000	S.T.



SWITCH OPEN IN ALL POSITIONS



<b>COMUS INTERNATIONAL</b>			
454 ALLWOOD RD. CLIFTON, NJ 07012 U.S.A. PH (973) 777-6900			
<b>TOLERANCES</b> (except as noted)  <b>DECIMAL</b> + .01 (.254) 2 Digit ± .005 (.127) 3 Digit  <b>FRACTIONAL</b> ± 1/64 (.397) <b>ANGULAR</b> ± 1/2 °	REF.:	SCALE: NONE	DRAWN BY: S.T.
	APPROVED:		
TITLE: <b>VIBRATION SENSOR-NORMALLY OPEN</b>			
DATE: 08/17/98		DRAWING NUMBER: <b>CM4400-0</b>	