



Koloona Industries Pty Ltd

Ph: +61 2 9820 5233

Email:sales@koloona.com.au

www.koloona.com.au

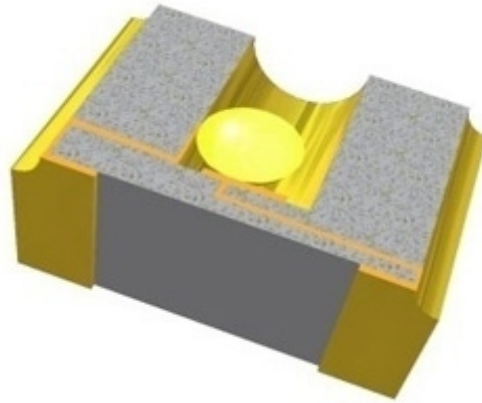
INTRODUCES

SENSOLUTE

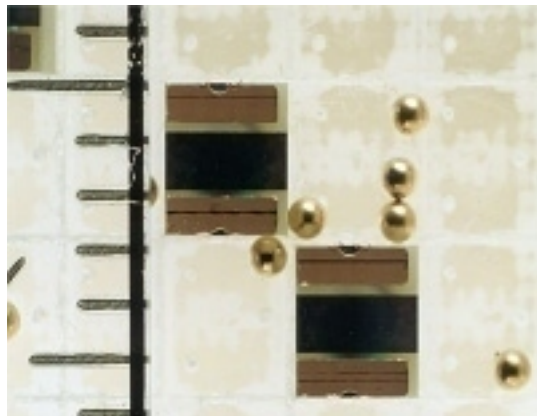
Solutions in Movement Detection



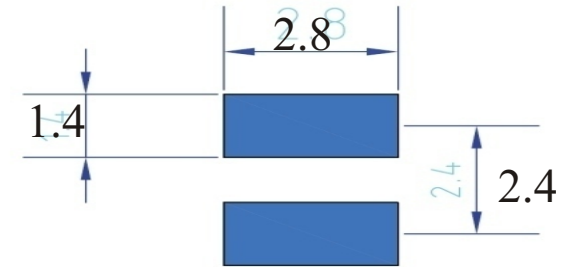
- Fully automatically SMD-mountable
- Gilded sphere and contact areas
- no mercury
- R_ON < 100 Ohm
- R_OFF > 30 Mega Ohm
- Response level approx. 50 mg
- Temperature range -20°C - +70°C
- Dimensions (LxWxH) 2.8 x 2.4 x 1.6 mm
- Silent sphere motion



The miniature vibration sensor is used for the detection of slight movements and vibrations by means of a mobile micro sphere. With the aid of tool-specific evaluation electronics, the miniature vibration sensor controls the operation of movement-sensitive tools. The sensor is typically used for applications such as front and rear bicycle lights, bike computers, mobile GPS systems, wireless PC mice and headsets, digital multimeters and tools provided with digital displays that are only switched on when in motion.



A mobile, gilded micro sphere is located inside the hollow space of a multi-layer circuit board. When moving, the micro sphere bridges two gilded contacts by switching over from a high resistive to a low resistive state.



Recommended footprint for micro vibration sensor [mm].

Compared to standard movement sensor.



Further info:

<http://www.koloona.com.au/techinfo.php>