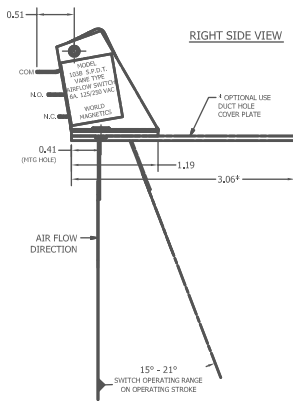
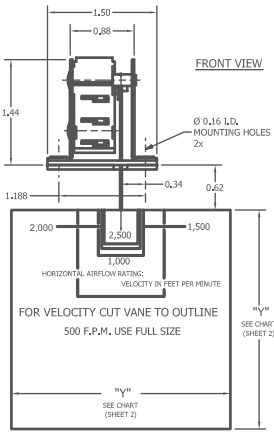


Made in USA

## FEATURES / BENEFITS

- Vane-operated switch for airflow detection
- Airflow ranges from 500–2500 ft per min
- Easy Installation—mounts directly onto duct
- Gold contacts option for low-current applications
- Moisture & fungus resistance models available



## SPECIFICATIONS

### MECHANICAL

Airflow ranges	500–2,500 ft per minute
Switch Operating Range	15°–20° of Operating Stroke
Release Airflow	Max 20% of Airflow Actuation Point (depending on orientation)
Mechanical Life	1,000,000 Cycles
Temperature Range	+40–125° F



### PHYSICAL

Housing Material	Plastic Dust Cover and Aluminum Mounting Bracket
Vane Material	Stainless Steel
Vane Dimensions	See Drawing
Electrical Connection	0.187 x 0.2" Terminals
Weight	0.04 lbs

### ELECTRICAL

Switch Type	SPDT Snap Action
Current Rating	6 A 125/250 VAC

Model Number	Part Number	Airflow Range	
103B	D21560	500–2,500 ft per minute	
103B-MF	D21561	500–2,500 ft per minute	* Mildew Resistant*

# 103B SERIES